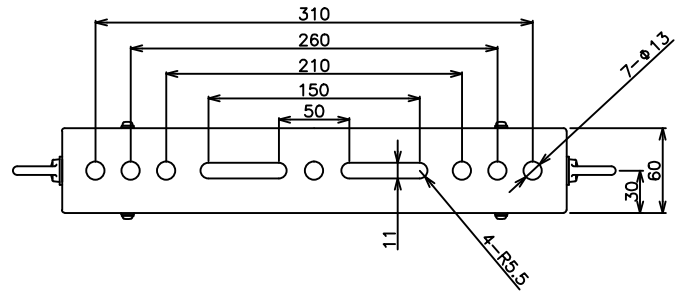
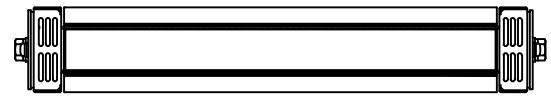
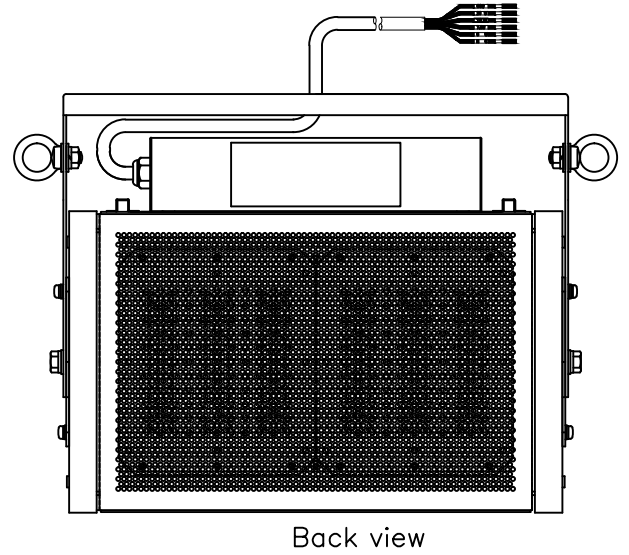
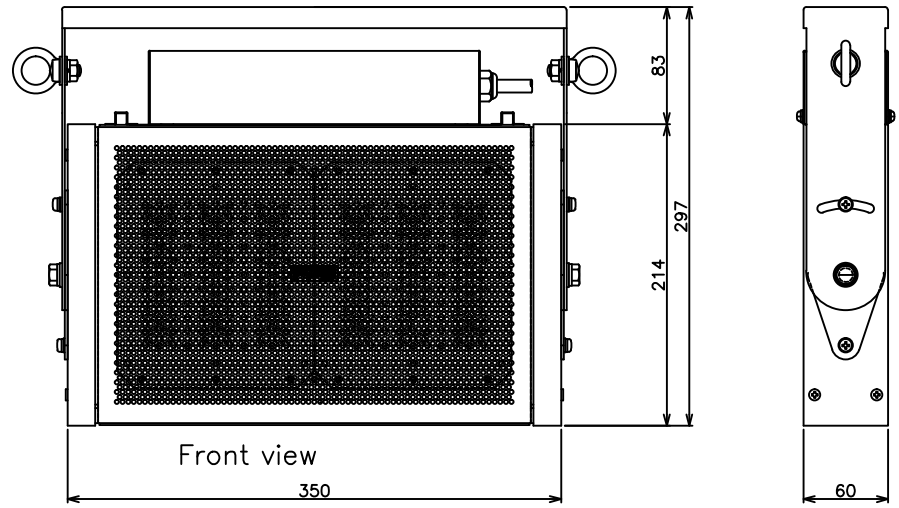


# MCMA flat panel speakers inside FP-200HW (2 side open air type)



## Specifications

Sound radiation type : 2 side open air type (sounds will ring from the front and back.)  
 Speaker configuration : MCMA flat speaker FPS1010M3(R2/R4) x 2pcs  
 Impedance: 500Ω (<20W) / 1kΩ (<10W) / 1.33kΩ (<7.5W) / 2kΩ (<5W)  
 Input : 20W / 10W / 7.5W / 5W  
 SPL : 91dB/W/m  
 Frequency range : 330Hz - 12kHz  
 Directional characteristics : Vertical 160C, Horizontal 60C (2kHz -6dB average)  
 Input connector: 1.5m length cable straight out (6 pin)  
 Pin assign : White: COM, Black: 20W, Brown: 10W, Red: 7.5W, Yellow: 5W, Green: NC  
 Materials Frame: ALP/SECC, Under paint: Powder coating, Surface paint: Acrylic,  
 Mounting bracket: SUS t2.0  
 Waterproof level: IPX5  
 Dimensions : W350×H297×D60 mm (including bracket, not including eyebolts)  
 Weight : App. 4.3kg  
 Color: Black (N-1 semi-gloss), brackets: stainless  
 Attachment : M8 stainless steel eye bolt, nut, washer x 2 sets



Itemref	Quantity	Title/Name, designation, material, dimension etc			Article No./Reference	
DRAW T.Yamaguchi.		Checked by	Approved by - date	File name	Date 2016,09,27	Scale
<b>FPS</b> INC. 株式会社エフピーエス				FP-200HW outdoor use plane wave speaker		
				Outline drawing		Edition 02